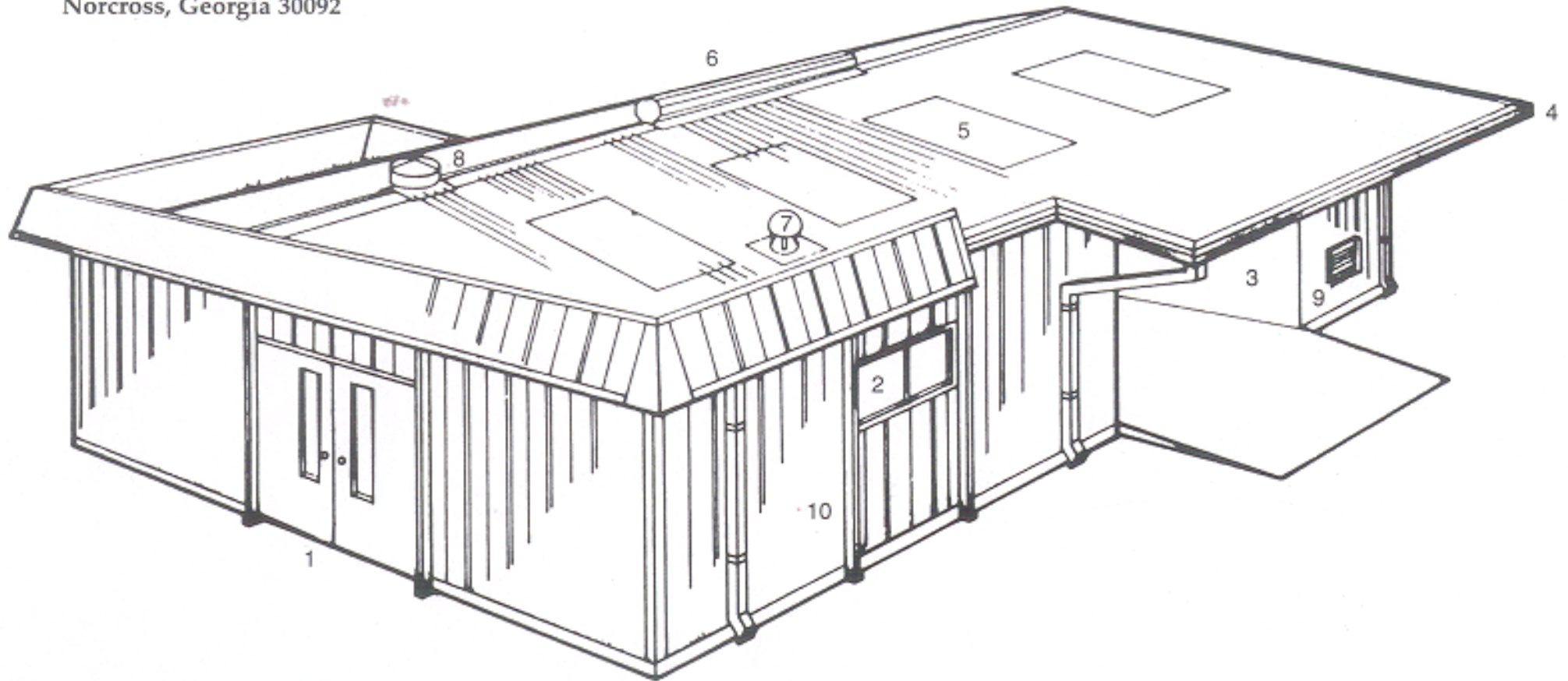




BUILDING SYSTEMS, INC.
3300 Holcomb Bridge Rd., Suite 201
Norcross, Georgia 30092



- | | |
|-------------------------------|---|
| 1. Non-handed Personnel Doors | 7. Roof Jack |
| 2. Windows | 8. Stationary Round Vest |
| 3. Liner Panels & Partitions | 9. Louver |
| 4. Eave Canopy | 10. Accent Battens & Panels |
| 5. Translucent Panels | 11. Purlin Extension Canopy (not shown) |
| 6. Ridge Vent | 12. Sliding Doors (not shown) |